



SAVITRI DEVI DAV PUBLIC SCHOOL, JAMTARA

SUMMER VACATION ASSIGNMENT- (2023-24)

CLASS: X

SUBJECT: ENGLISH

1. Collect five reports from any English newspaper and fulfill the assignment given below:
 - i. New words
 - ii. Different types of sentences
 - iii. Abbreviations
 - iv. Use of different types of tenses.
2. Read the following novels and make one report on the basis of your understanding the text
 - i. Tom Jones
 - ii. Gulliver Travels
3. Prepare five analytical paragraphs of your own choice.
4. Prepare a comparative study between two freedom fighters, Nelson Mandela and Bhagat Singh. for the freedom of their country.
5. Make a record of your conversation with your friends and family members and change them into indirect speech (Any five).
6. Plan a visit to one of your places of interest during the upcoming Summer Break. Narrate the experiences of your stay at the place and your interactions with the people there. Mention about the best attractions of the place, its weather conditions and height from sea level & other specialities of the place.

SUBJECT: HINDI

1. 'मेरी अविस्मरणीय यात्रा' शीर्षक के तहत किसी यात्रा का वृत्तांत 1000 शब्दों में चित्र सहित प्रस्तुत करें।
2. 'ऊँची नाक वाले' विषय पर एक व्यंग्य लिखें।
3. तेलंगाना की प्राकृतिक/ भौगोलिक सौंदर्य का सचित्र वर्णन करें।
4. देशभक्ति एवं वर्षा ऋतु से जुड़ी पाँच-पाँच कविताओं का संग्रह करें। साथ ही स्वयं भी दो-दो कविताएँ लिखें।
(सभी रचनाएँ ए-4 साइज पेज पर लिखकर एक ही चैनल फ़ाइल में जमा करें।)

SUBJECT: SANSKRIT

एकपदेन उत्तरत - - -

- (क) सुखं किम् अस्ति? (ख) 'विशेष-ज्ञानं' इत्यस्य पर्यायपदं किम्?
 - (ग) 'प्राप्तं करोति' इति अर्थे श्लोके किं पदं प्रयुक्तम्?
 - (घ) 'कोमलतया वर्णोच्चारणम्' इत्यर्थे किं पदं प्रयुक्तम्?
 - (ङ) 'वर्णानां समुचित-स्थानम्' इत्यर्थे किं पदं प्रयुक्तम्?
 - (च) 'स्वाध्याय' इत्यस्य समुचितम् अर्थं लिखत।
 - (छ) 'वाङ्मयं तप उच्यते' अस्य वाक्यस्य कर्तृपदं कर्तृपदं क्रियापदं किम्?
 - (ज) 'अपूर्वः कोऽपि कोशोऽयं' अत्र विशेष्यपदं किम्?
 - (झ) 'उहस्य' विलोमशब्दः किम्?
 - (ड) 'व्याकरणः' इति शब्दस्य पदच्छेदं कृत्वा परिभाषितं कुरुत।
1. रेखाङ्कितपदानाम् आधृत्य प्रश्ननिर्माणं कुरुत।
 - (क) अयं कोशः अपूर्वः।
 - (ख) शिष्यः स्वयमेधया पठति।

(ग) वाक्यम् अनुद्वेगकरं भवेत्।

(घ) शारदा अस्माकं सन्निधिं क्रियात् ।

(ङ) शिष्यः आचार्यात् शिक्षायाः चतुर्थांशः ग्रहणं करोति ।

2. भषिककार्यम्

(क) 'अचः स्वराः' अत्र 'अच्' प्रत्याहारे के वर्णाः सन्ति? लिखत।

(ख) कति माहेश्वर सूत्राणि?

(ग) यण् सन्धेः परिभाषा सूत्रं च लिखत

(घ) अयादि सन्धेः सूत्रं परिभाषा च लिखत।

(ङ) वर्गाः कति सन्ति? तानि नामानि लिखत।

3. संधि व संधि विच्छेदं कुरुत।

(क) सैव (ख) चास्ति (ग) स्वेच्छया (घ) श्रवणम् (ङ) लोकाभिरामम्

(च) अन्वगच्छत (छ) हरये (ज) वागर्थौ (झ) तन्नाम (ञ) गात्रेष्वपि

(क) भो+अति (ख) इन्द्रियाणि+आदौ (ग) गुरु+उपदेशेन (घ) मुने+ए

(ङ) परम+ऋषिः (च) रजनी+ ईशः (छ) बाला +एका विष्णो+ए

(ज) इति +एतत् , (झ) ज्ञै+अते (ञ) इच्छाति+आत्मनः

4 परियोजना कार्यम् (Art Integration) झारखण्ड राज्य को तेलंगणा राज्य से संकेत बिन्दु: —

i) परिचयः (introduction)

ii) क्षेत्रफल (area)

iii) बोली (language)

iv) खान-पान

v) वेश- भूषा

vi) जनसंख्या

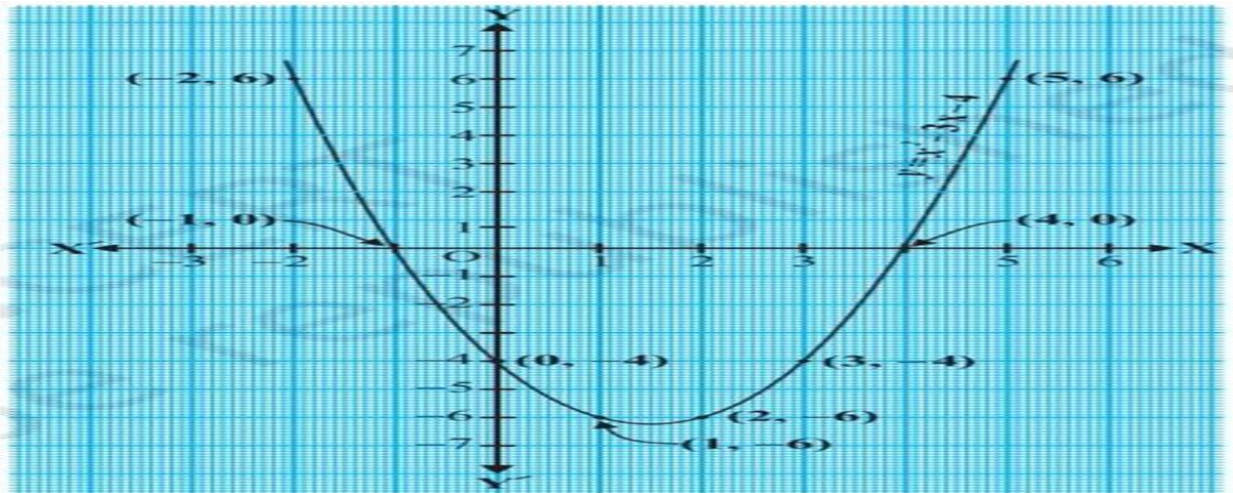
vii) जलवायु

viii) शिक्षा

SUBJECT: MATHEMATICS

1. Given that $\text{LCM}(77, 99) = 693$, find the HCF (77,99).
2. Write the exponent of 3 in the prime factorization of 162.
3. If the product of two numbers is 2500 and their HCF is 50, find their LCM.
4. What is the greatest possible speed at which a man can walk 52 km and 91 km in an exact number of minutes?
5. If $A = 2n + 13$ and $B = n + 7$, where n is a natural number then find HCF of A and B.
6. Find the smallest number which when increased by 17 is exactly divisible by 520 and 468.
7. Find the LCM and HCF of 120 and 144 by using Fundamental Theorem of Arithmetic.
8. Find the greatest number that will divide 445, 572 and 699 leaving remainders 4, 5 and 6 respectively.
9. On MG road, three consecutive traffic lights change after 36, 42 and 72 seconds. If the lights are first switched on at 9.00 am, at what time will they change simultaneously?
10. Show that $5 + 3\sqrt{2}$ is an irrational number.
11. Prove that $\sqrt{3}$ is irrational.
12. Prove that $\sqrt{p} + \sqrt{q}$ is irrational, where p, q are primes.
13. The graph of a polynomial $p(x)$ does not intersect the x-axis but intersects y-axis in one point. Find the number of zeroes of $p(x)$.
14. If α and β are the zeroes of the quadratic polynomial $f(x) = x^2 - px + q$, then find the value of $\alpha^2 + \beta^2$?

15. If α, β are the zeroes of the polynomial $p(x) = x^2 - p(x + 1) - c$ such that $(\alpha + 1)(\beta + 1) = 0$. What is the value of c ?
16. If 2 and -3 are the zeroes of the quadratic polynomial $x^2 + (a + 1)x + b$; then find the values of a and b .
17. Find a quadratic polynomial whose zeroes are $3 + \sqrt{5}$ and $3 - \sqrt{5}$.
18. Find a quadratic polynomial whose one zero is -8 and sum of zeroes is 0.
19. Find a quadratic polynomial whose one zero is -5 and product of zeroes is 0.
20. If the zeroes of the polynomial $x^2 + px + q$ are double in value to the zeroes of $2x^2 - 5x - 3$, find the value of p and q .
21. Find the quadratic polynomial sum of whose zeroes is 8 and their product is 12. Hence, find the zeroes of polynomial.
22. If one zero of the polynomial $(a^2 + 9)x^2 + 13x + 6a$ is reciprocal of the other. Find the value of a .
23. Find a quadratic polynomial whose zeroes are 1 and -3. Verify the relation between the coefficients and zeroes of polynomial.
24. α, β are zeroes of the quadratic polynomial $x^2 - (k + 6)x + 2(2k - 1)$. Find the value of k if $\alpha + \beta = 1/2$
 $\alpha\beta$ Find the zeroes of the following polynomials by factorisation method and verify the relationship between the zeroes and coefficients of the polynomials(25and26).
25. $4x^2 + 5\sqrt{2}x - 3$
26. $2s^2 - (1 + 2\sqrt{2})s + \sqrt{2}$
27. For what value of k the following pair of linear equation has no solution?
 $2x + ky = 1$; $6x + 4y = 3$
28. For what value of a the following pair of linear equation has infinitely many solution?
 $ax - 3y = 1$; $-12x + ay = 2$
29. Find whether the following pair of equations has no solution, unique solution or infinitely many solutions.
 $5x - 8y + 1 = 0$; $3x - 24/5 y + 3/5 = 0$
30. Find out whether the pair of linear equations, $x = y$ and $x - 2 = y - 2$ are consistent or inconsistent.
31. Solve for x and y : $47x + 31y = 63, 31x + 47y = 15$
32. Solve for x and y : $\sqrt{2}x - \sqrt{3}y = 0, \sqrt{5}x + \sqrt{2}y = 0$
33. Find the solution of the pair of equations-
 $x/10 + y/5 - 1 = 0$ and $x/8 + y/6 = 15$.
Hence, find λ , if $y = \lambda x + 5$.
34. Solve the following system of linear equations graphically: $x - y = 1, 2x + y = 8$. Shade the area bounded by these two lines and the y -axis.
35. The taxi charges in a city consist of a fixed charge together with the charge for the distance covered. For a distance of 10 km, the charge paid is ₹ 105 and for a journey of 15 km, the charge paid is ₹ 155. What are the fixed charges and the charge per km? How much does a person have to pay for travelling a distance of 25 km?
36. The sum of a two-digit number and the number obtained by reversing the digits is 66. If the digits of the number differ by 2, find the number. How many such numbers are there?
37. Find the four angles of a cyclic quadrilateral ABCD in which $\angle A = (2x - 1)$, $\angle B = (y + 5)$, $\angle C = (2y + 15)$ and $\angle D = (4x - 7)$
38. Due to heavy storm an electric wire got bent as shown in the figure. It followed a mathematical shape



❖ Answer the following questions below

- (i) Name of shape in which the wire bent.
 - (ii) The zeroes of the polynomial are
 - (iii) If the graph is either completely above X-axis or completely below X-axis, then find the numbers of zeroes
 - (iv) What is the value of the polynomial, if $x = -2$
39. A seminar is being conducted by an Educational Organisation, where the participants will be educators of different subjects .The number of participants in Hindi ,English and Mathematics are 60, 84 and 108, respectively.



- a. In each room the same number of participants are to be seated and all of them being in the same subject, hence maximum number participants that can accommodated in each room are
 - (a) 14
 - (b) 12
 - (c) 16
 - (d) 18
 - b. What is the minimum number of rooms required during the event?
 - (a) 11
 - (b) 31
 - (c) 41
 - (d) 21
 - c. The LCM of 60,84 and 108 is
 - (a) 3780
 - (b) 3680
 - (c) 4780
 - (d) 4680
 - d. The product of HCF and LCM of 60,84 and 108 is
 - (a) 55360
 - (b) 35360
 - (c) 45500
 - (d) 4536
40. A test consists of 'True' or 'False' questions. One mark is awarded for every correct answer while $\frac{1}{4}$ mark is deducted for every wrong answer. A student knew answers to some of the questions. Rest of the questions he attempted by guessing. He answered 120 questions and got 90 marks.

Type of question	Marks given for correct answer	Marks deducted for wrong answer
True/False	1	0.25

Consider the number of questions whose answer known to the student be x and questions attempted by guessing be y

- (i) Represent both the situations algebraically
 - (a) $x + y = 120$, $x - 4y = 360$
 - (b) $x + y = 120$, $4x - y = 360$
 - (c) $x - y = 120$, $x + 4y = 500$
 - (d) $x + y = 120$, $4x + 4y = 360$
- (ii) If answer to all questions he attempted by guessing were wrong, then how many questions did he answer correctly?
 - (a) 69
 - (b) 96
 - (c) 66
 - (d) none of these
- (iii) How many questions did he guess?
 - (a) 51
 - (b) 24
 - (c) 54
 - (d) none of these
- (iv) If answer to all questions he attempted by guessing were wrong, answered 80 correctly, then how many marks he got?
 - (a) 70
 - (b) 80
 - (c) 40
 - (d) none of these

LAB ACTIVITY

1. To draw the graph of a quadratic polynomial and observe:
 - (a) The shape of the curve when the coefficients of x^2 is positive.
 - (b) The shape of the curve when the coefficients of x^2 is negative.
 - (c) Number of zeroes.
2.
 - (a) To solve the different types of system of linear equation on graph paper.
 - (b) To obtain the condition of consistency of system of equations.

SCIENCE

SUBJECT: PHYSICS

1. What is the magnification of the images formed by plane mirrors and why?
2. The image of a candle flame placed at a distance of 30 cm from a mirror is formed on a screen placed in front of the mirror at a distance of 60 cm from its pole. What is the nature of the mirror? Find its focal length. If the height of the flame is 2.4 cm, find the height of its image. State whether the image formed is erect or inverted.
3. An object is placed at a distance of 12 cm in front of a concave mirror of radius of curvature 30 cm. List four characteristics of the image formed by the mirror.
4. The linear magnification produced by a spherical mirror is -1. Analyzing this value state the (i) type of mirror and (ii) position of the object with respect to the pole of the mirror. Draw any diagram to justify your answer.
5. A concave mirror has a focal length of 20 cm. At what distance from the mirror should a 4 cm tall object be placed so that it forms an image at a distance of 30 cm from the mirror? Also calculate the size of the image formed.

SUBJECT: CHEMISTRY

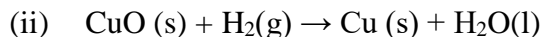
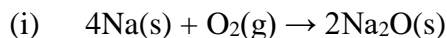
❖ Answer the following questions-

1. When greens iron salt is heated strongly, its colour finally changes to brown and odour of burning sulphur is given out.
 - i. Name the iron salt.
 - ii. Name the type of reaction that takes place during the heating of iron salt.
 - iii. Chemical equation for the reaction involved.
2. Write the balanced equations for the following chemical reactions:
 - (i) Hydrogen + chlorine \rightarrow hydrogen chloride

(ii) Barium chloride + Aluminium sulphate \rightarrow Barium sulphate + Aluminium chloride

(iii) Sodium + water \rightarrow Sodium Hydroxide

3. Identify the substances that are oxidised and the substances which are reduced in the following reactions.



4. Lead nitrate solution is added to a test tube containing potassium iodide solution.

1. Write the name and colour of the compound precipitated.

2. Write the balanced chemical equation for the reaction involved.

3. Name the type of this reaction justifying your answer.

5. 5.2 g of silver chloride is taken in a China dish and the China dish is placed in sunlight for sometime. What will be your observation in this case? Write the chemical reaction involved in the form of a balanced chemical equation. Identify the type of chemical reaction.

6. A solution of slaked lime produced by the reaction is used for white washing walls. Calcium hydroxide reacts slowly with the carbon dioxide in air to form a thin layer of calcium carbonate on the walls. Calcium carbonate is formed after two to three days of white washing and gives a shiny finish to the walls. It is interesting to note that the chemical formula for marble is also CaCO_3 .

a) Write the formulas of slaked lime and quick lime.

b) Explain why calcium carbonate is used for white washing and not any other substance.

c) Explain the importance of writing the physical states in a chemical equation.

d) Write any one application of calcium carbonate other than white washing.

6. Compare the minerals found in Jharkhand and Telangana with their physical and chemical properties. Make PPT for the same.

SUBJECT: BIOLOGY0

1. Which is the correct sequence –

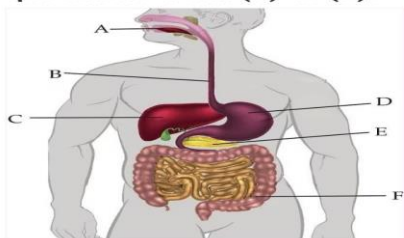
A) mouth \rightarrow stomach \rightarrow small intestine \rightarrow oesophagus \rightarrow large intestine

B) mouth \rightarrow oesophagus \rightarrow stomach \rightarrow large intestine \rightarrow small intestine

C) mouth \rightarrow stomach \rightarrow oesophagus \rightarrow small intestine \rightarrow large intestine

D) mouth \rightarrow oesophagus \rightarrow stomach \rightarrow small intestine \rightarrow large intestine

The given diagram is of a human digestive system. Study the diagram and answer any of the four questions from (a) to (e).



(a) Which of these correctly represent the labels B, C, D and E?

(i) B- Oesophagus, C- Liver, D- Stomach, E- Pancreas

(ii) B- Pancreas, C- Oesophagus, D- Liver, E Stomach

(iii) B- Stomach, C- Pancreas, D- Oesophagus, ELiver

(iv) B- Liver, C- Stomach, D- Pancreas, EOesophagus

(b) The secretion that is released by label C is:

(i) Bile

(ii) Pepsin

(iii) Saliva

(iv) Gastric juice

(c) How does it help in fat digestion?

Answer

Role of bile in fat digestion:

(i) It **makes the acidic food alkaline** to facilitate the action of enzyme lipase on it.

(ii) Bile salts **break down fats** present in food into small globules for enzymes to act.

(d) The digestion of food starts in

- (i) A
- (ii) D
- (iii) E
- (iv) F

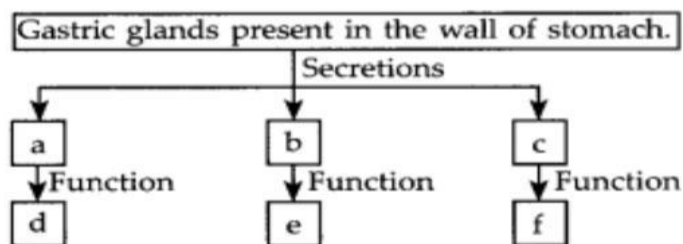
(e) In case of diarrhoea, which major process does not take place normally in region F?

- (i) Absorption of food
- (ii) Absorption of water
- (iii) Secretion of hormones
- (iv) Removal of waste material

- ❖ How do the plants obtain carbon dioxide and water?
- ❖ 'Stomata remain closed in desert plants during daytime'. How do they do photosynthesis? What is compensation point?
- ❖ Why is small intestine in herbivores longer than in carnivores?
- ❖ What will happen if mucus is not secreted by the gastric glands?
- ❖ State the form in which the following are stored:
 - (i) Unused carbohydrates in plants.
 - (ii) The energy derived from food in humans,
- ❖ Where does digestion begin? What is the name given to the process of using the absorbed food for producing energy?

Question 3.

Complete the following flow chart as per the given instructions.



- ❖ Describe the digestion of food in the small intestine. What is peristaltic movement?
- ❖ What is the function of the large intestine in the human digestive system?
- ❖ What is the role played by the liver and pancreas in addition to the digestion of food?
- ❖ Write the flow chart of enzymatic breakdown (Digestion) of protein.

SOCIAL SCIENCE

SUBJECT- HISTORY

- 1) Who made the famous remark 'When France sneezes, the rest of Europe catches cold'?
 - a) Metternich
 - b) Mazzini
 - c) Garibaldi
 - d) Louis Philippe
- 2) The Treaty of Constantinople was signed in _____.
 - a) 1835

- b) 1735
 - c) 1834
 - d) 1832
- 3) The famous Italian Revolutionary Giuseppe Mazzini was born in _____ in 1807.
- a) Turin
 - b) Rome
 - c) Genoa
 - d) Atlanta
- 4) Giuseppe Mazzini founded the secret underground society named 'Young Europe' in _____.
- a) Marseilles
 - b) Berne
 - c) Vienna
 - d) Brussels
- 5) What was Zollverein? Why was it formed?
- 6) Briefly explain the process of unification of Italy.
- 7) Describe the main clauses of the Treaty of Vienna of 1815.
- 8) Explain how folklore, folk songs raised the spirit of nationalism in Europe.
- 9) How did the Polish language work as a symbol of struggle against Russian dominance?
- 10) Read the source given below and answer the questions that follow:
- Frederic Sorrieu prepared a series of four prints visualizing his dream of a world made up of 'democratic and social Republics', as he called them. The first print of the series shows the peoples of Europe and America – men and women of all ages and social classes – marching in a long train, and offering homage to the Statue of Liberty as they pass by it. Artists of the time of the French Revolution personified Liberty as a female figure. She bears the torch of Enlightenment in one hand and the Charter of the Rights of Man in the other. On the earth in the foreground of the image lie the shattered remains of the symbols of absolutist institutions. In Sorrieu's utopian vision, the peoples of the world are grouped as distinct nations, identified through their flags and national costume. Leading the procession, way past the Statue of Liberty, are the United States and Switzerland, which by this time were already nation-states. France, identifiable by the revolutionary tricolour, has just reached the statue. She is followed by the peoples of Germany, bearing the black, red and gold flag.
- ❖ Answer the following questions :
- A. Who was Frederic Sorrieu?
 - B. In which year did Frederic Sorrier prepare a series of four prints?
 - C. What is meant by "absolutist"?
 - D. Explain the meaning of "utopian vision"?

SUBJECT- CIVICS

1. Which of the following statements about power sharing is false?
- a) Power sharing helps in reducing the conflicts between social groups.
 - b) Power sharing is a good way to establish political order.
 - c) Power sharing is not the spirit of democracy.
 - d) All of the above.
2. Which of the following statements are true about power sharing?
- a) Power is shared among different organs of government.
 - b) Power can be shared among governments at different levels.
 - c) Power may also be shared among different social groups.
 - d) All of the above.
3. Consider the following statements about the ethnic composition of Sri Lanka:
- a) Major social groups are the Sinhala- speaking (74%) and Tamil-speaking (18%)?
 - b) Among the Tamils, there are two sub-groups, Sri Lankan Tamils and Indian Tamils.
 - c) There are about 7% Christians, who are both Tamil and Sinhala.

- d) Most of the Sinhala-speaking are Hindus or Muslims and most of the Tamil-speaking are Buddhists.
4. Which of the above statements are correct?
- A, B, C
 - A, B, D
 - B, C, D
 - A, B, C, D
5. Directions:- In the following questions, the Assertions (A) and Reason(s) (R) have been put forward. Read both statements carefully and choose the correct answer from the below:
- If both Assertion (A) and Reason (R) are true and Reason (R) is the correct explanation of Assertion (A).
 - If both Assertion (A) and Reason (R) are true but Reason (R) is not the correct explanation of Assertion (A).
 - Assertion (A) is true but Reason (R) is false.
 - Both Assertion (A) and Reason (R) are false.
1. Assertion (A): In Belgium, the leaders realized that the unity of the country is possible by respecting the feelings and interest of different countries.
Reason(R): Belgium favourite Dutch speaking community.
2. Assertion (A): Horizontal distribution of power allows different organs of the government placed at same level to exercise different powers.
Reason(R): The separation ensures that different organs can exercise unlimited power.
3. Assertion (A): In a democracy, everyone has voice in the shaping of public policies.
Reason(R): India has federal system.
6. Case study questions:
The Sri Lankan Tamils launched parties and struggles for the recognition of Tamil as an official language, for regional autonomy and equality of opportunity in securing education and jobs. But their demand for more autonomy to provinces populated by the Tamils was repeatedly denied. By 1980s several political organisations were formed demanding an independent Tamil Eelam (state) in northern and eastern parts of Sri Lanka. Answer the following MCQs by choosing the most appropriate options:
- Why was there dissatisfaction among Sri Lankan Tamils?
 - The Sri Lankan government had followed the principle of majoritarianism.
 - The Sri Lankan government did not follow the principle of power sharing.
 - The government of Sri Lanka gave preference to Sinhallas.
 - All the above
 - What were the steps taken by the government of Sri Lanka to alienate Tamils?
 - Non-recognition to Tamil language
 - Preference through Sinhallas in education and jobs
 - State protection to Buddhism
 - All the above
 - Which areas of Sri Lanka had the majority of Sinhallas?
 - Southern part
 - Western part
 - Both (a) and (b)
 - None of the above
 - What were the main demands of Tamils?
 - Independence in areas occupied by Tamils
 - Autonomy in the areas occupied by Tamils
 - Recognition of Hinduism as the state religion
 - To drive out Sinhallas from Sri Lanka
6. Who elects the community government in Belgium?
7. "Power sharing is the true spirit of democracy". Justify the statement.
8. What was the cause of tension between Dutch and French speaking communities during 1950s and 1960s?
9. Describe the geographical and ethnic composition of Sri Lanka.
10. Explain any three consequences of the majoritarian policies adopted by the Sri Lankan government.

SUBJECT: GEOGRAPHY

ASSERTION AND REASONING OPTIONS

A- Both A and R true and R is the correct explanations of A.

B- Both A and R are true but R is NOT the correct explanation of A.

C- A is true bu R is false.

D- A is false but R is true.

E- Both A and R are false.

1. Assertion : Terrace cultivation does not restrict erosion.

Reason : Running water cuts through the clayey soils and makes deep channels as gullies. This helps to cultivate crops.

2. Assertion : Land is a natural resource of utmost importance.

Reason : Land can be used for various purposes.

3. Assertion : The availability of resources is not the only necessary condition for the development of any region.

Reason : Not only availability of resources but also corresponding change in technology is necessary for development of any region.

4. Assertion : Arid soil is unsuitable for cultivation.

Reason : Arid soil is generally sandy in texture and saline in nature. It restricts the filtration of water.

5. Assertion : Resources are free gifts of nature.

Reason : Resources like soil, air, water are easily available in nature.

6. Which one of the following type of resource is iron ore? (Textbook)

- (a) Renewable
- (b) Biotic
- (c) Flow
- (d) Non-renewable

7. Under which of the following type of resource can tidal energy be put? (Textbook)

- (a) Replenishable
- (b) Human-made
- (c) Abiotic
- (d) Non-renewable

8. Which one of the following is the main cause of land degradation in Punjab? (Textbook)

- (a) Intensive cultivation
- (b) Deforestation
- (c) Over-irrigation
- (d) Overgrazing

9. In which one of the following States is terrace cultivation practised? (Textbook)

- (a) Punjab
- (b) Plains of Uttar Pradesh
- (c) Haryana
- (d) Uttaranchal

10. In which of the following States is black soil found? (Textbook)

- (a) Jammu & Kashmir
- (b) Gujarat
- (c) Rajasthan
- (d) Jharkhand

Project work:- (social science)

Make a PPT on Art Integration under Ek Bharat Shrestha Bharat Programme as a comparative study between the states JHARKHAND & TELANGANA on the following topics:-

1. Historical background of both states
2. Climatic changes , height of the states from sea level, dress, food, agricultural production.

3. Political conditions, government, folk dance, culture.
4. SGDP(state Gross Domestic Product), literacy rate, male literacy, female literacy, employment opportunities.

Note:- It is a common project for all the students of class 9. Each student have to submit individual ppt. Try to make attractive ppt.

SUBJECT: ECONOMICS

1. Differentiate between growth and development.
2. Make a list of the per capita income of India and the neighbouring countries and analyse the data.
3. Is there any difference between Development and sustainable development? Explain.
4. Kerala, with lower per capita income, has a better human development ranking than Punjab. Hence, per capita income is not a useful criterion at all and should not be used to compare States. Do you agree? Discuss.
5. On what basis the rich and low income countries have been categorized in the world? What are the limitations of this approach? According to the World Development Report, 2017, India comes in which category? Give reason for the same.

Note:- write the answer of the questions on your class economics copy.

Project work:- (Social Science)

Make a PPT on Art Integration under Ek Bharat Shrestha Bharat Programme as a comparative study between the states JHARKHAND & TELANGANA on the following topics:-

1. Historical background of both states
2. Climatic changes , height of the states from sea level, dress, food, agricultural production.
3. political conditions, government, folk dance, culture.
4. SGDP(state Gross Domestic Product), literacy rate, male literacy, female literacy, employment opportunities.

Note:- It is a common project for all the students of class 10. Each student has to submit an individual ppt. . Try to make an attractive ppt.

SUBJECT: INFORMATION TECHNOLOGY

1. Note down different types of hormones released by the brain when a human is in stress.
2. Paste/draw five activities which reduce stress.
3. Explain with images any three barriers of communication in the channel file.